

# Felt baby doll

Age: 7-11    Group size: 6-10

Duration: several sessions – 1 hour  
30mins



Preparation time: 40 mins

## Resources

- Felt squares 14cms
- Felt scraps
- Needles
- Cotton
- Flesh coloured cotton/ plain cotton and brusho dye 10cms x 7cms (x2 per doll)
- Stuffing
- Paintbrushes/pencils
- Templates
- Pins
- Scissors
- Buttons etc for decoration (optional)
- Glue (for decorations if not sewing on)
- Fabric pens/felt pens



## Preparation

Make templates. Depending on the age of the children you may want to use the templates to cut out the body shape from the felt.

Fold a piece of paper in half and draw half of a rough body shape. Cut out the shape through both thicknesses and unfold.

If you have no flesh coloured material, use brusho dye. Dip the cotton fabric into the dye, then remove immediately and wring out. Rinse the cotton

under the cold tap so that the colour fades if using red or brown. Leave to dry.

## Activity - body

Pin the template to the felt and cut out 2 pieces. If the children are to sew on any decoration, do this now. If using



## Felt baby doll

Age: 7-11    Group size: 6-10

Duration: several sessions – 1 hour  
30mins



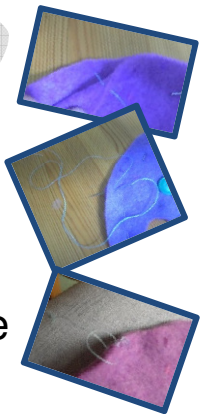
buttons, remember that they pose a choking hazard for younger children. Simple patches can be sewn on using a rough running stitch. Pin the 2 pieces of felt together so that they fit exactly on top of each other. Sew them together using blanket (buttonhole) stitch.

Blanket stitch – as there is an inside to the doll, tie a knot at the end of the cotton and bring it out through the felt at the right side with the knot hidden between the 2 layers.

Bring the needle through the 2 layers of felt. Once the needle is through, the cotton forms a loop. Bring the loop

in front of the needle and pass the needle through it. Pull the cotton until the stitch is formed. There will be a line of cotton along the join in the 2 pieces of felt. Bring the needle back to the right side again and then make a second stitch in the same way as the first one. Try and keep the stitches tight and close together because the stuffing needs to stay in the doll.

Before getting to the end of a piece of cotton, bring the needle between the 2 pieces of felt, push the needle in and out of the felt as if making a little stitch. Pass the thread through the loop of the cotton a couple of times to make a knot. Pull it tight and cut off the end.



Continue sewing all the way around leaving the neck open so that the head can be added.

Use a pencil or the handle of the paintbrush to stuff the body, filling the legs and arms first. The stuffing and cotton for the head used in the example photographed was



## Felt baby doll

Age: 7-11    Group size: 6-10

Duration: several sessions – 1 hour  
30mins



recycled from an old jacket.

Head – take 2 rectangles of flesh coloured cotton. Sew them together down the longest side using a running stitch.



Use a new piece of thread and sew along one of the narrow ends. Pull the thread so that the material gathers up. Turn the head inside out and stuff it. Use a running stitch just below the stuffing and about 0.5-1cms from the bottom of the head. Push the open end of the head into the body cavity and sew the head in place using a running stitch that runs between the 2 fabrics.



Use pens to draw on hair, eyes, nose and mouth.

Alternatively make a hat using scraps of material 6cms wide in a semi circle shape. Put the right sides (side with colour or pattern) together and tack. Turn inside out so the right sides are showing and put on doll's head.



Golden Time

